

## Content/Functionality report

### Online Conductor – Client login

Ribbon style navigation (All commands concentrated on upper section of the display)

Landing page – Dashboard selected

User can:

- Select type of message
- Select date range to display messages activity
- Select client ID
- View number of received messages and status
  - o Overview of messages In progress
  - o Overview of messages Completed
  - o Overview of messages Failed

### Overview Tab

- Display list of messages in the case of EFC contains
  - o Message ID
  - o Creation Date
  - o Transactions Status
  - o UMR
  - o UCR
  - o Cedent/Insured
  - o Contract Start Date
  - o Contract End Date
  - o Section
  - o Status
  - o Level
  - o Underwriter Referred UUID
  - o Referred Broker Reference
  - o Broker Name
  - o Broker contact Phone#
  - o Broker Contact email
  - o Underwriter Lloyd's #
- Display list of messages in the case of A&S contains
  - o UMR
  - o UCR
  - o Account transaction Type
  - o Contract Type
  - o Contract Nature
  - o Contract Start Date
  - o Contract End Date
  - o Creation Date
  - o Status
  - o Level
  - o Underwriter Referred UUID
- Search messages
- Message can be selected by row
- Desired functionality: each column search
- Desired functionality: Double Click one the message should open a window with information about the message, or jump to the Message window to display message content?

### Message Tab – ECF message type

- Message ID selector
  - o Preview and next message navigation

- Message information
  - o Electronic Claim File
  - o Acknowledgement detail
  - o Contact Detail
  - o EFC Details
  - o Document content details
    - Attachment file details
  - o Pagination feature
  - o Search feature

## Workflow Tab

### Messages Overview process

- Message UUID
- Date
- Simple Msg Service – Post – Received
- A&S Document upload prepare
- A&S Document upload Send
- Skinny Tech Upload Prepare

## Conductor DCX Prototype version – Administrator login

Ribbon style navigation (All commands concentrated on upper section of the display)

Landing page – Dashboard selected

User can:

- Select type of message
- Select date range to display messages activity
  - o Fast selection for yesterday, week from now, and month from now range messages
  
- Administration Services Dashboard
- Administration System Dashboard
- Overview of incoming message list
  - o UUID
  - o Created Time
  - o Status
- Overview outbound message list
  - o UUID
  - o Created Time
  - o Status

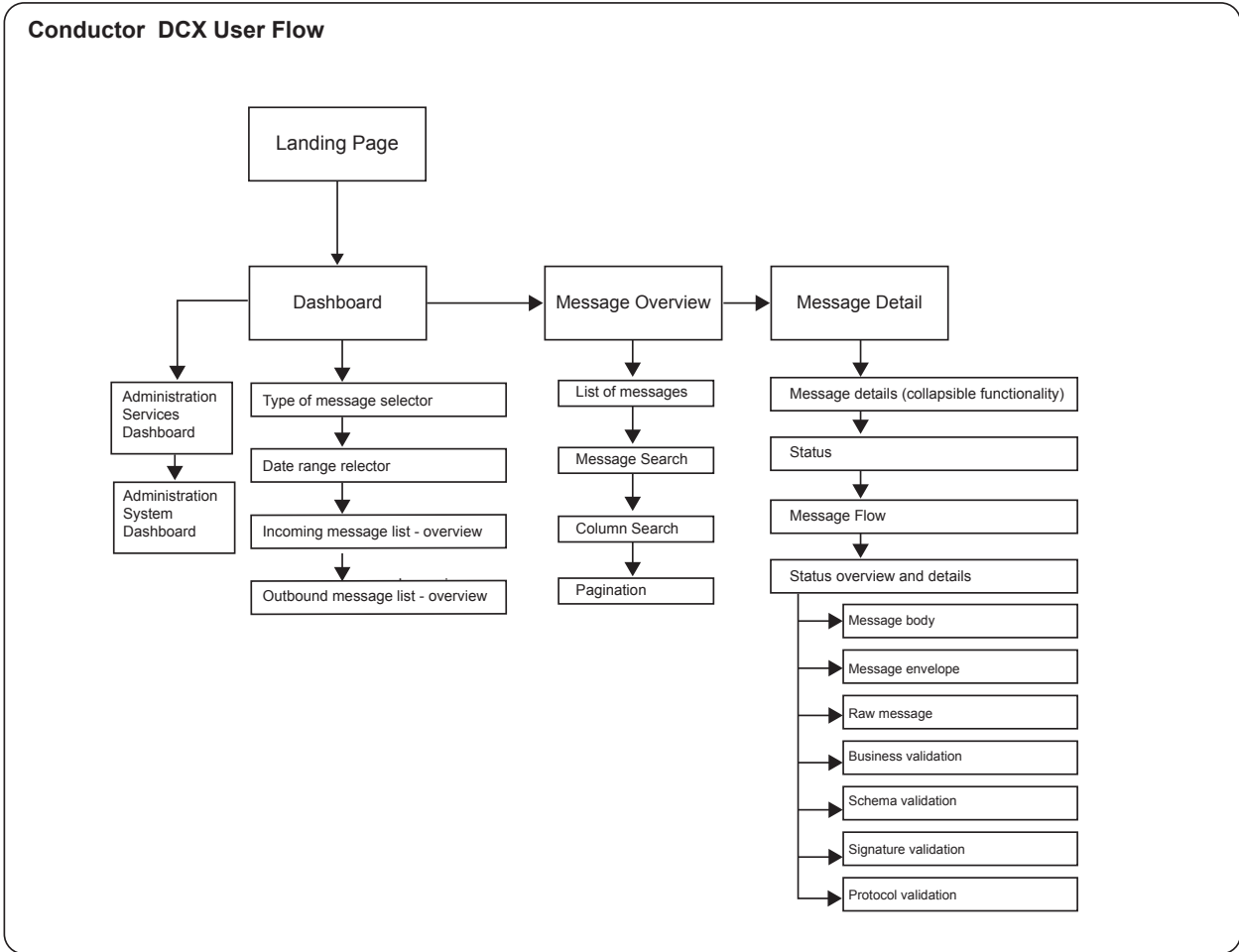
### Messages Tab

- Display list of messages
  - o Message UUID
  - o Date/Time Sent
  - o Inbound/Outbound
  - o Sender
  - o Receiver
  - o Ultimate Sender
  - o Ultimate receiver
  - o Message Type
  - o Version
  - o Status
- Message Search box
- Message can be selected by row
- Desired functionality: each column search

### Detail Tab

- Message Details, collapsible functionality
- Overview of the status and details
- Message body
  - o View
  - o Download
- Message envelope
  - o View
  - o Download

- Raw message
  - o View
  - o Download
- Validations
  - o Business validation
  - o Schema validation
  - o Signature validation
  - o Protocol validation



**Additional functionality to be implemented**

- New message types configuration (add, delete, modify)
- Add new on-board client (add, delete, modify)
- managing certificates
- email